

Public Document Pack



HEALTH AND WELLBEING BOARD

Thursday, 12 February 2015 at 6.30 pm
Conference Room, Civic Centre, Silver
Street, Enfield, EN1 3XA

Contact: Penelope Williams
Board Secretary
Direct : 020-8379- 4098
Tel: 020-8379-1000
Ext: 4098
Fax: 020-8379-3177 (DST)
Textphone: 020 8379 4419
E-mail: penelope.williams@enfield.gov.uk
Council website: www.enfield.gov.uk

Dear All

To Follow Papers – Health and Wellbeing Board 12 February 2015

Please find attached the papers marked as “to follow” on the agenda for the next meeting of the Health and Wellbeing Board.

Item 3 – Proposals for Chase Farm Hospital (Pages 1 – 24) – Presentation Slides

Please bring these papers with you to the meeting.

Reports for item 4 on the Section 75 Agreement and item 5 on the CCG Operating and Financial Plan will be sent out next week.

If you have any queries in the meantime please contact me, details above.

Thank you

Yours faithfully

Penelope Williams

Penelope Williams
Board Secretary

This page is intentionally left blank

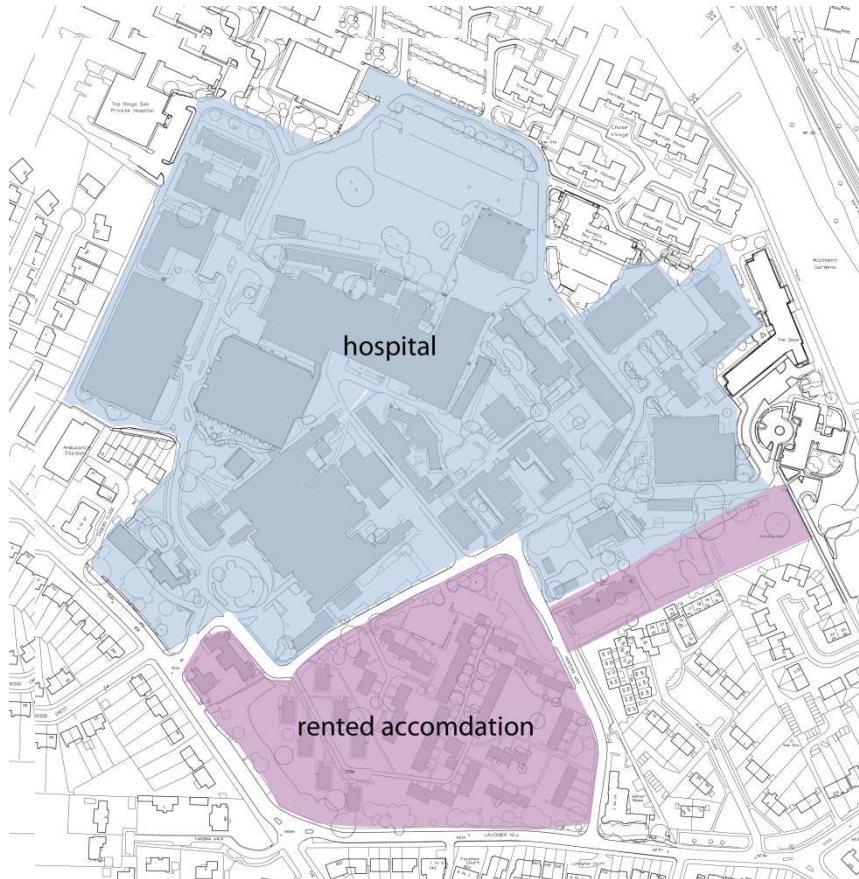
Chase Farm Hospital redevelopment:

- progress on planning
application
- health and well-being

Maggie Robinson Head of property &
Angela Bartley Assistant Director of Public Health

Background

Existing site



- Existing buildings are dispersed over the site
- Buildings in poor state of repair
- Design of the facilities not suitable for modern healthcare
- the solution - deliver BEH services via a comprehensive redevelopment of the site
- the trust has submitted an outline planning application

Proposed timescales

November 2014:	outline planning submitted
January 2015:	outline business case to trust board and DH
March 2015:	enabling works/site assembly
Early 2015:	surplus land sold in phased parcels
May 2015:	reserved matters planning
Summer 2015:	full business case to trust board and DH
January 2016:	main works start
Spring 2018:	new hospital opens
Autumn 2018:	potential for school to open

Proposed masterplan



Indicative masterplan

new hospital campus – 17 acres

new residential units – 18 acres

new school – 4 acres

world class expertise  local care

Royal Free London 
NHS Foundation Trust

Clinical functional content

- 48 in-patient elective surgical beds
- 8 theatres
- 16 theatre recovery spaces
- 4 high dependency unit (HDU) beds
- 15 day case beds
- 44 in-patient rehabilitation beds
- 10 space planned investigative treatment unit (PITU)
- 10 space haematology/oncology day unit
- Urgent care centre (UCC) – 7 consulting rooms, 1 minor ops room and 1 plaster room

Clinical functional content cont.

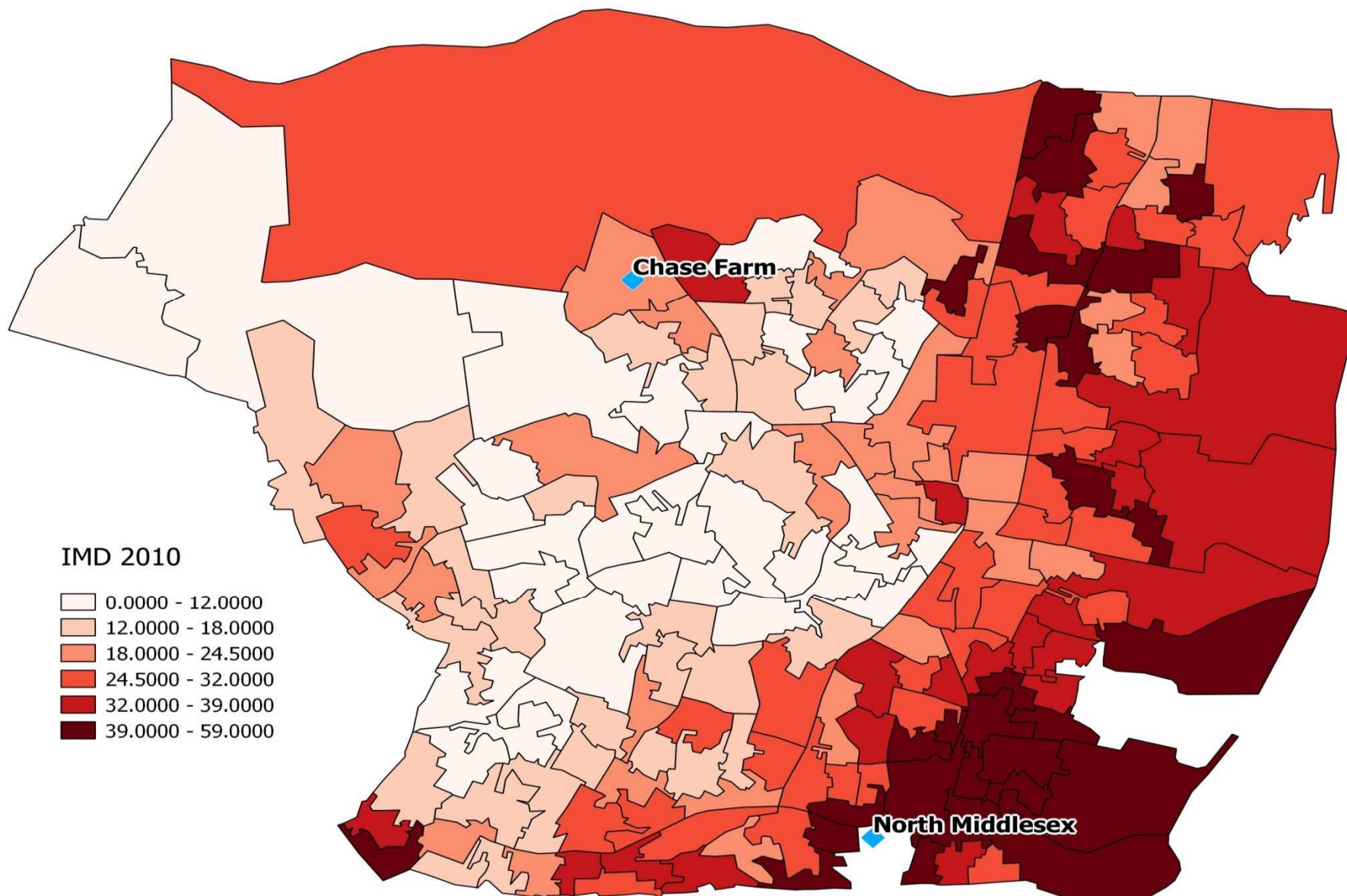
- GP out of hours service – 1 consulting room
- older people's assessment unit (OPAU) - 9 consulting rooms, 1 treatment room
- paediatric assessment unit (PAU) - 3 PAU consulting rooms
- paediatric out-patients - 7 consulting rooms, 1 treatment room
- adult out-patients – 18 generic consulting rooms, plus breast clinic, physiological measurement, oral, orthodontic, ENT, audio and maxillo-facial surgery, ophthalmology and gynaecology suite

Clinical functional content cont.

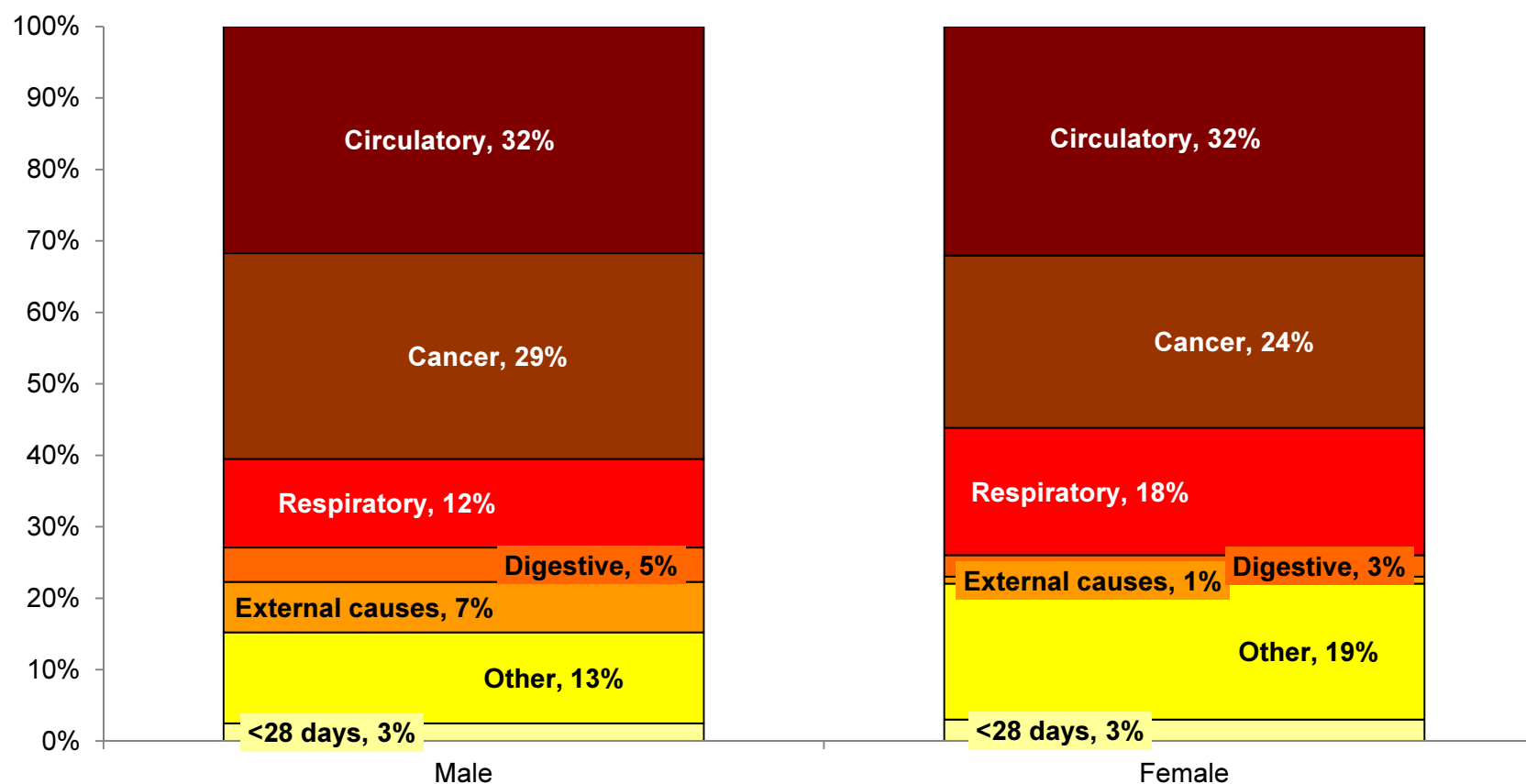
- 6 virtual consult booths for telemedicine
- 6 phlebotomy bays
- anti-coagulation service space
- physiotherapy and musculo-skeletal (MSK) space on the wards and in OPAU
- 4 endoscopy rooms (plus an additional 2 shell spaces for future growth)
- diagnostics: 4 x-ray rooms, 6 ultrasound, 1 MRI plus 1 mobile MRI, 1 CT scanner plus fluoroscopy function within x ray
- pharmacy
- non clinical space: café, restaurant, retail unit, administration hot desking, teaching space, FM allowance and stores

How we can turn the redevelopment of the chase farm site into a national example of integrated health and community wellbeing ?

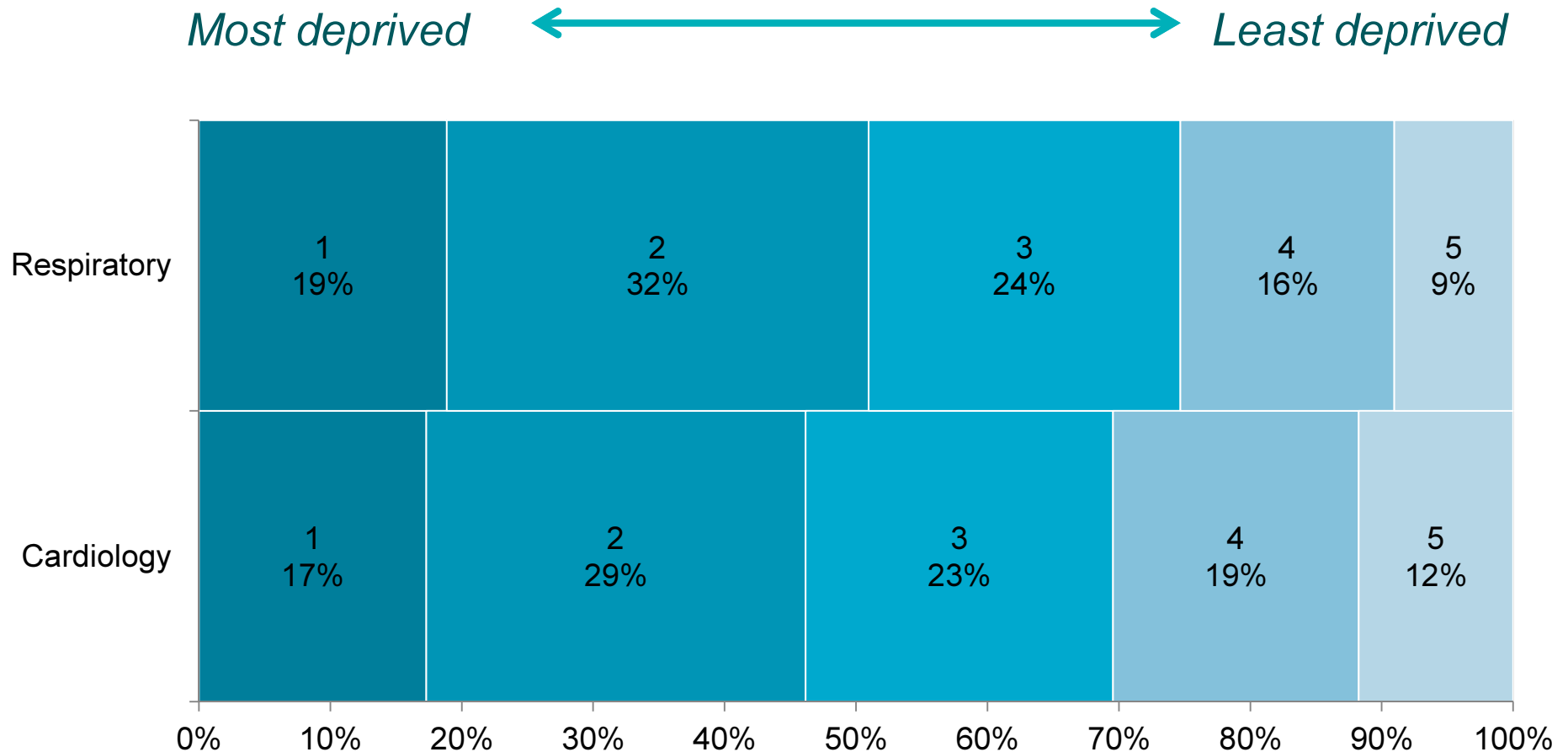
Deprivation and health are inextricably linked



The breakdown of the life expectancy gap between Enfield most deprived quintile and Enfield least deprived quintile, by cause of death, 2009-2011



Enfield residents attending cardiology and respiratory out-patients CF 2014



Creating a health promoting environment to live , work and be treated in

world class expertise  local care

Health Promoting Environment



- Cycle lane and parking
- Encouraging cycling / walking
- Green Gym
- No smoking
- Healthy food options
- Creation of a health hub
- Running track
- Playground
- Community classes
- Public health Principles as part of the contracting process

Staff Health and Wellbeing



- New catering contact tackling the obesogenic environment -
- My Fitness Pal
- Flu vaccinations
- Every contact counts in JD
- Running Track and Green Gym
- Fit at the Free initiative
- Mindfulness
- Cycling and walking initiatives

Preventative Services for patients



- World Class Prevention Services
- Stop Smoking,
- Alcohol Screening - referral,
- Domestic Violence Screening,
- Adult and Child vaccinations
- Employment and health,
- Homelessness
- Co creation of services around the client

Using every contact counts approach to prevent ill health – example - maternal and child health

The foundations for virtually every aspect of human development.... What happens during these early years (starting in the womb) has lifelong effects on many aspects of health and well-being.'

Marmot 2010

- Opportunity to think differently about services for families pre and post natal
- Identifying and supporting 'at risk' families and mothers
- Working across organisational boundaries
- Supporting maternal health and wellbeing
- Supporting healthy child development

The population of Enfield (2013)

- In Enfield, 54% of the under 16 are growing up in areas that are amongst the 30% most deprived communities in England, compared to 35% across England.
- In 2012, 29.6 % of children (-16) in poverty



Social and material deprivation is usually associated with poorer health outcomes amongst children,

- Immunisation: lower levels compared to London (2013/14)
 - 87.0% MMR (1 dose, 5 y.o.) coverage (7th lowest /32)
 - 71.9 % MMR (2 doses, 5 y.o.) coverage (4th lowest /32)
- Obesity
 - 26.5% children aged 4-5 are overweight (Eng: 22.5%)
 - 39.4% children aged 10-11 are overweight (Eng: 33.5%)
- Oral health
 - Tooth decay at age 5 is the highest in London: average 2.05 teeth decay per child (GL: 1.23)
- Infant mortality
 - 5.8 per 1,000 births in 2010-12 - 2nd highest in GL

Contacts with Enfield patients aged 16 and under- unmet potential

In Enfield

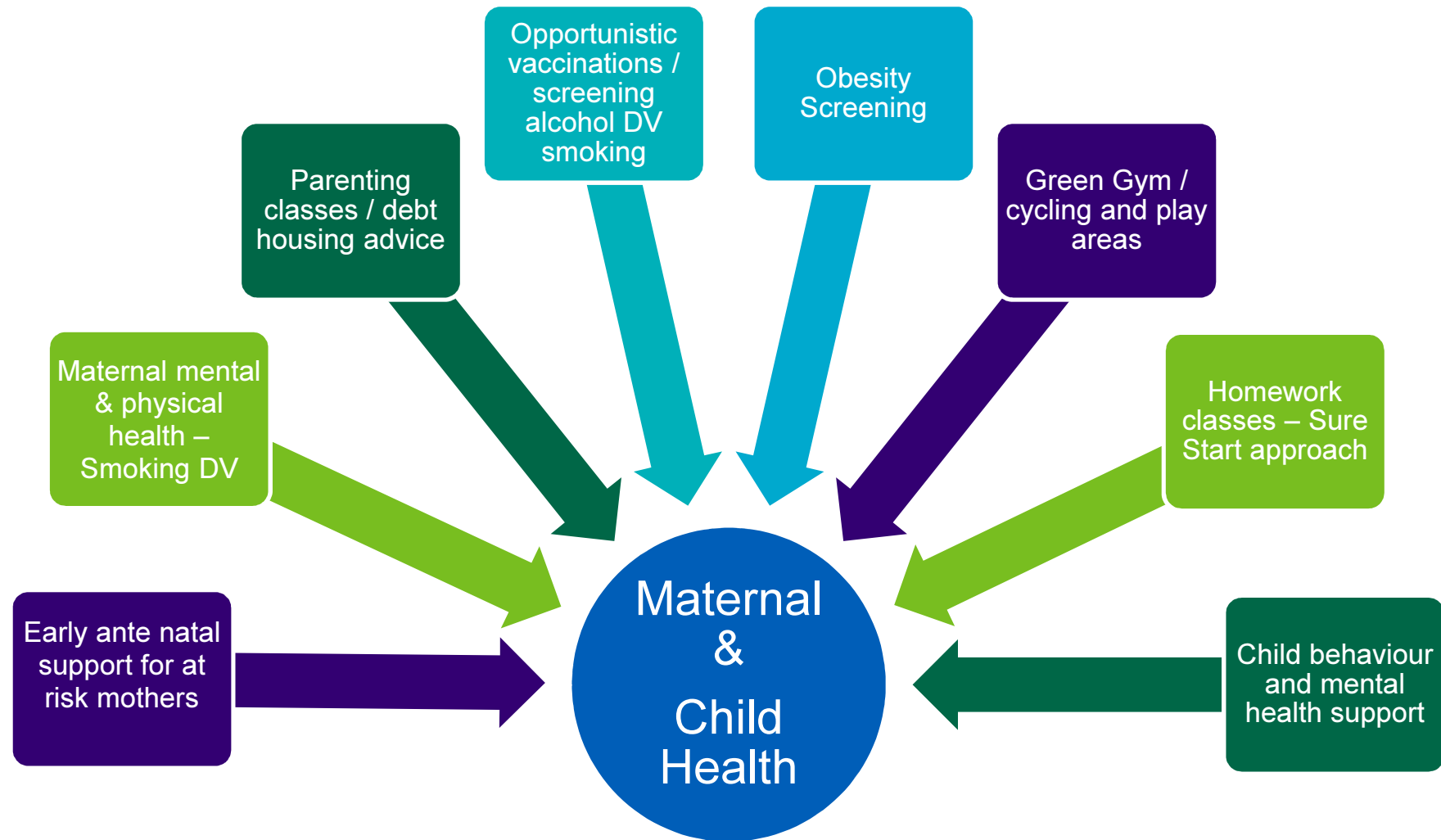
- **37,100 girls** aged 16 and under
- **39,500 boys** aged 16 and under

Site	Out-patient appts 2014	Distinct patients
Chase Farm Hospital	8,261	4,719
Barnet Hospital	5,557	3,128
Royal Free Hospital	1,585	778

We looked at our three main sites in 2014:

- **Close to 6,200** of them had at least one contact in an outpatient setting at one of our three main sites.
- Adding A&E and in-patient encounters, this rises to **12,300**.
- (PHOF 2013)

Building a health promoting clinical and community environment



world class expertise  local care

Royal Free London 
NHS Foundation Trust

**We have experience of
delivering public health
initiatives in an hospital setting**

world class expertise  local care

Outcomes for Domestic Violence Initiative

Total referrals n= 122 (Nov 2013-Dec 2014) RF site

High risk (e.g. MARAC) – 21

Reported to the police – 29

Perpetrator charged – 1

Perpetrator prosecuted – 2

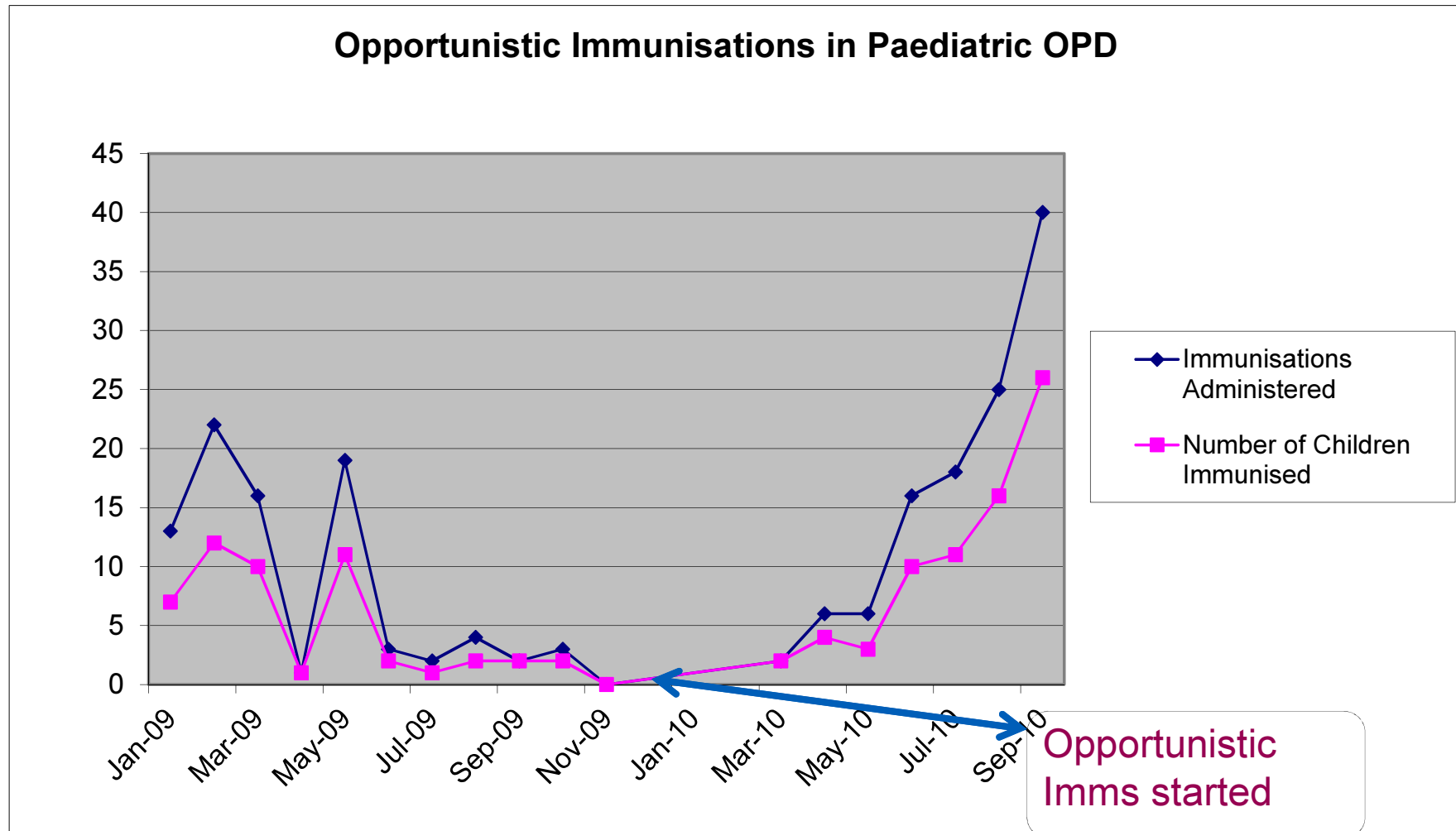
Injunctions Obtained - 4

Safety planning & declined service or signposting or information - 69

world class expertise  **local care**

Royal Free London 
NHS Foundation Trust

Opportunistic Vaccinations at the RF site



Questions ?

- Where can we complement your initiatives and work together ?
- What are we missing - questions

Thank you

world class expertise  local care